

Product information

Sprint is a classic stretch knit product with a smooth macro cellular construction and a classic design that will stand the test of time. Sprint has multi-directional stretch for excellent upholsteryability on task chair bases and backs.

The flexibility and performance of this fabric was inspired by dynamic sportswear reflecting our pride in hosting the London 2012 Olympics and the endurance of the winning Team GB!

Contact	
UK Head Office:	+44 (0)1924 490491
Germany:	+49 7031 60 84 30
Scandinavia:	+45 32 55 20 01
France/Benelux:	+32 56 227 266
USA:	+1 616 288 0655
China:	+86 (0) 21 6133 1812

www.camirafabrics.com



Technical information

UK

Composition
100% Polyester

Width
150cm minimum

Weight
325g/m² ±5% (490g/lin.m ±5%)

Abrasion Resistance
5 year guarantee / >100,000 Martindale cycles (full details available)

Flammability
BS EN 1021 - 1:2014 (cigarette)
BS EN 1021 - 2:2014 (match)
BS 7176:2007 Low Hazard
UNI 9175 Class 1 IM
Note: Flammability performance is dependent on foam used.

Light Fastness
5 (ISO 105 - B02:2014)

Fastness to Rubbing
Wet: 4, Dry: 4 (ISO 105 - X12:2002)

Cleaning
Washable to 60°C. Wipe clean with a damp cloth or shampoo using proprietary upholstery shampoo.

Please note that seam performance is dependent on seam construction and needle and thread type. We recommend that appropriate sewing advice be taken.

Note: Batch to batch variations in shade may occur within commercial tolerances. We reserve the right to alter technical specifications without notice. The Unregistered Design Rights and the Copyright in all designs are the exclusive property of Camira Fabrics Limited.

D

Zusammensetzung
100% Polyester

Breite
150cm nutzbare Breite

Gewicht
325g/m² ±5% (490g/lfd.M ±5%)

Scheuerfestigkeit
5 Jahre Garantie / >100,000 Martindale Scheuertouren (Details auf Anfrage)

Feuersicherung
BS EN 1021 - 1:2014 (Zigarettentest)
BS EN 1021 - 2:2014 (Streichholztest)
BS 7176:2007 Low Hazard
UNI 9175 Class 1 IM
Bemerkung: Schwerentflammbarkeit hängt von verwendetem Schaum ab.

Lichtechtheit
5 (ISO 105 - B02:2014)

Reibecktheit
Nass: 4, Trocken: 4 (ISO 105 - X12:2002)

Reinigung
Waschbar bis 60°C. Regelmässig staubsaugen. Dazu mit einem feuchten Tuch abwischen, oder mit einem speziellen Polsterschaum behandeln.

Eine optimale Nahtausreissfestigkeit hängt von der Nahtfahne, der verwendeten Nadel und dem Näh-Garn ab. Wir empfehlen daher Nähversuche durchzuführen.

Wichtig: Handelsübliche Farbabweichungen können auftreten und berechtigen nicht zur Reklamation. Wir behalten uns die Änderung technischer Spezifikationen vor. Die registrierten und nicht registrierten Urheberrechte der Dessinierungen sind ausschliessliches Eigentum der Camira Fabrics Limited.

F

Composition
100% Polyester

Largeur
150cm minimum

Poids
325g/m² ±5% (490g/m.l ±5%)

Résistance à l'abrasion
Garantie de 5 ans / >100,000 Martindale tours (renseignements complémentaires disponibles)

Flammabilité
BS EN 1021 - 1:2014 (cigarette)
BS EN 1021 - 2:2014 (allumette)
BS 7176:2007 Low Hazard
UNI 9175 Class 1 IM
Notez: Réaction au feu dépend de la mousse utilisée.

Solidité à la lumière
5 (ISO 105 - B02: 2014)

Solidité au Frottement
Mouillé: 4, Sec: 4 (ISO 105 - X12:2002)

Nettoyage
Lavable jusqu'à 60°C. Aspirer régulièrement. Essuyer avec une étoffe humide ou nettoyer à l'aide d'un produit approprié pour tissus d'ameublement.

Veuillez noter que la performance du joint dépend de sa construction ainsi que de l'aiguille et du type de fil utilisés.

Remarque: une variation de couleurs peut provenir (commerciallement tolérable). Nous réservons le droit de changer les spécifications techniques sans préavis. Les Droits de Conception non-enregistrés et les droits d'auteur de tous les motifs sont la propriété exclusives de Camira Fabrics Limited.

ES

Composición
100% Poliéster

Ancho
150cm mínimo

Peso
325g/m² ±5% (490g/lin.m ±5%)

Resistencia a la abrasión
Garantía de uso 5 años / >100,000 Martindale ciclos (más información disponible bajo consulta)

Inflamabilidad
BS EN 1021 - 1:2014 (cigarillo)
BS EN 1021 - 2:2014 (cerilla)
BS 7176:2007 Low Hazard
UNI 9175 Class 1 IM
Condiciones ignífugas dependientes del tipo de foam utilizado.

Solidez a la luz
5 (ISO 105 - B02:2014)

Solidez al rozamiento
Húmedo: 4, Seco: 4 (ISO 105 - X12:2002)

Limpieza
Lavable hasta 60°C. Limpiar con aspiradora frecuentemente. Bien lavar con un paño húmedo o con un champú apropiado para tapicería.

Tenga en cuenta que el rendimiento de la costura depende de la construcción de la costura, además de la aguja y del tipo de rosca. Le recomendamos que se aconsejen para coser la costura.

Nota: las variaciones de lote a lote en la sombra se puede producir dentro de tolerancias comerciales. Nos reservamos el derecho a efectuar modificaciones técnicas sin previo aviso. Los derechos sobre los diseños no registrados y los derechos de autor en todos los diseños son propiedad exclusiva de Camira Fabrics Limited.

camira

style with substance

www.camirafabrics.com

Sprint



Task seating



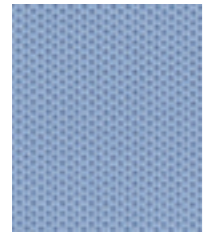
Cigarette & Match



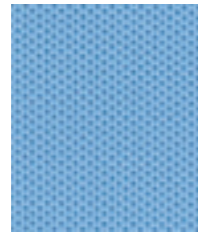
Year guarantee

Sprint

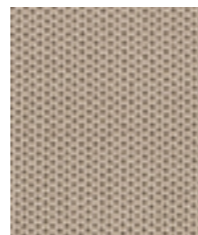
www.camirafabrics.com/samples



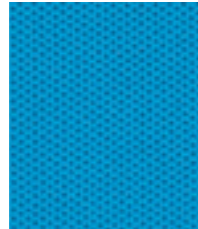
Winner
PS035



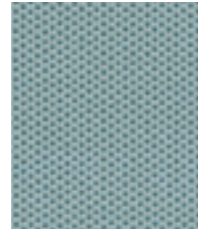
Stretch
PS031



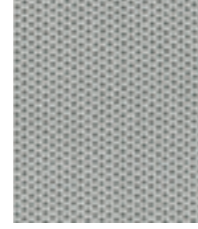
Hurdle
PS001



Victory
PS032



Nutrition
PS039



Silver
PS028



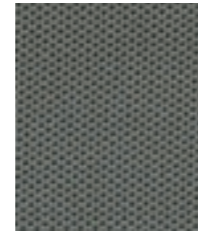
Stride
PS023



Focus
PS037



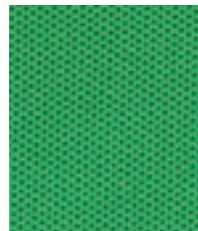
Champion
PS041



Block
PS029



Heat
PS038



Bolt
PS022



Energy
PS026



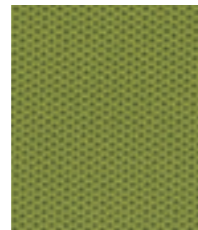
Competitor
PS040



Line
PS033



Bound
PS042



Train
PS027



Speed
PS030



Opponent
PS034



Final
PS043



Stamina
PS024



Exercise
PS025



Challenger
PS021

Note:

• Highlighted shades are available from stock. Other colourways are available in 10 - 15 working days.

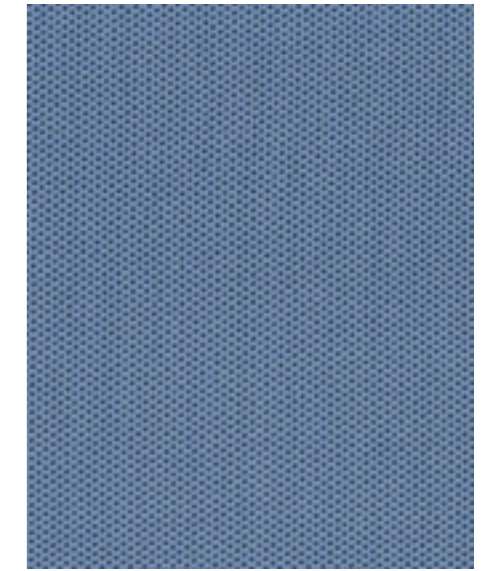
Photographic fabric scans are not colour accurate. Always request actual fabric samples before ordering.



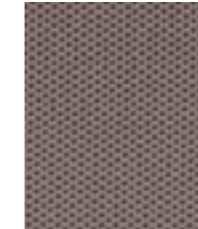
Relay
PS002



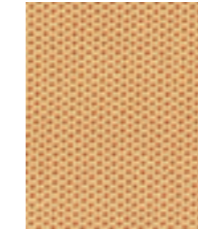
Pace
PS005



Leap
PS036



Baton
PS003



Lane
PS006



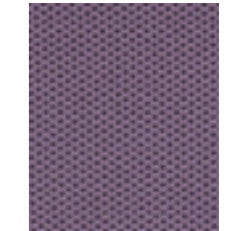
Metres
PS009



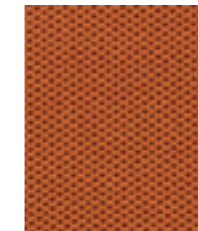
Gold
PS015



Plunge
PS016



Steady
PS019



Track
PS007



Runner
PS017



Ready
PS018



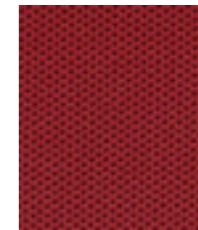
Go
PS020



Bronze
PS008



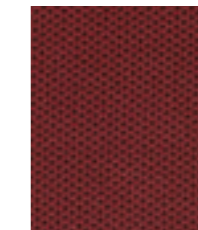
Start
PS010



Finish
PS011



Distance
PS014



Overtake
PS012



Stopwatch
PS013



Chase
PS004